



RAILWAY WAGON SCALES VRT-03, VRT-04 FROM COMPANY LLC "STATERA"

Weighing railway wagons in motion!



DESCRIPTION OF RAILWAY WAGON SCALES

- ✓ The scales are installed in the space between railway sleepers. This operation does not require to stop the movement of trains and wagons.
- ✓ For installation and operation of scales, there is no need to make any mechanical modifications in railway line.
- ✓ Weighing of wagons is made automatically without involvement of operator in this process
- ✓ The scales can be installed on any type of railway gauge and rails.
- ✓ Due to compact size of scales and their low weight, customer bears minimum costs for transportation or delivery of scales.
- ✓ Scales can be installed within one day in any part of the world.

MAIN FUNCTIONS OF SCALES



24/7 automatic weighing of wagons without involvement of operator in this process



Preparation and issuing of all necessary documents for each railway rolling stock



Identification of type of wagons, detection of locomotives and empty wagons



Identification of wagons with overload, imbalance on the sides and trolleys



Diagnostics of technical condition of railway rolling stock



Photography of identification numbers of weighed wagons



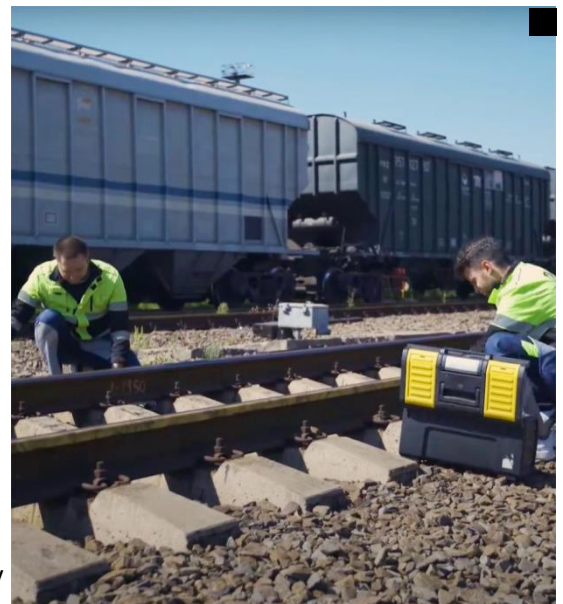
Archiving the results of weighing and synchronizing them with database in real time

ABOUT TECHNOLOGY

We produce our scales out of your rails without making any construction works, cutting, drilling and other mechanical modifications.

Technology of installation of scales is very simple. Mechanical specialists fix a set of load cells on existing rails which measure deformation of rails under the pressure of wheels. Based on measurements the software program calculates the weight of wagon and symmetry of loading. The sensors are mounted in the space between railway sleepers. This operation does not require to stop the movement of trains and wagons or to make any mechanical modifications in railway line.

Weighing is made in motion at the speed of 1-90 km/h. Wagon scales VRT-03, VRT-04 are the author's patented technology developed by group of engineers from Rostov-on-Don, Russia.





QUICK INSTALLATION AND SIMPLE USE

- Quick and easy installation and maintenance without need to stop the movement of trains and wagons on the railway line.
- Working section of railway line for application of scales starts from 25 m.
- Wagon scales can be installed on any type of railway gauge and rails.
- Wagon scales can also be installed on an inclined railway line without loss of accuracy in measurements.
- Scales can function in curve sections of railway track
- No power wiring required. The scales are supplied with power via communication cable.
- Transit speed is not limited.
- It is possible to deinstall the scales at one place of railway section and easily install at the other place within shortest terms
- Location of the control room at any distance from the scales.



RELIABLE OPERATION AND APPLICATION

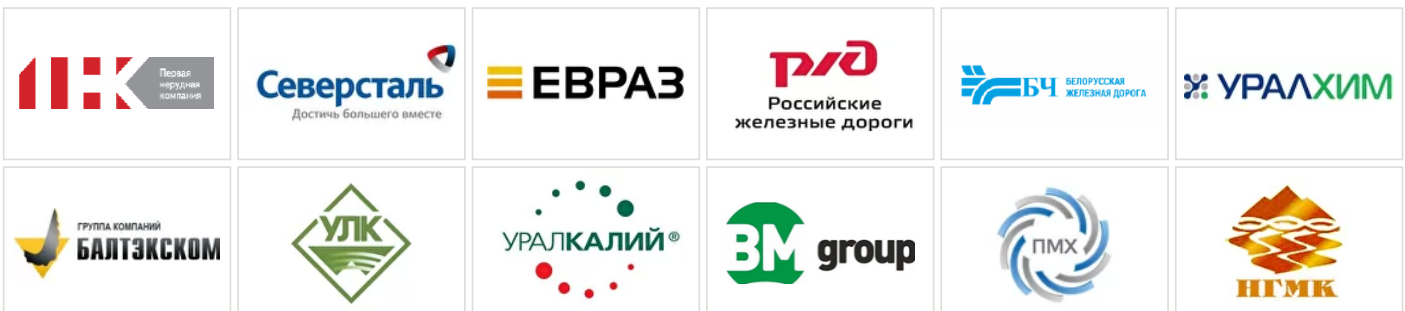
- As the scales are integrated directly into existing rails and there are no any foundation for them built, complicated mechanisms and rail joints, the scales can ensure the highest level of performance, safety and functionality
- Maintenance, calibration and adjustment of the system is made via Internet.
- The weighing system consists of two or more independent measuring lines with parallel communication channels. In case of failure of one line, other lines will continue to function.



FAVORABLE TERMS AND CONDITIONS FOR COOPERATION

- We can calculate potential volumes of delivery of scales based on each individual request of potential customer.
- Our production and technical facilities are based in Rostov-on-Don, Russia
- We guarantee high quality for our products and are always available for technical consultation of our clients. We also provide with special warranty conditions for our customers.
- The scales are certified for use in Russia. In case of need we can also apply for and arrange issuing necessary international certificate based on request and demand of potential foreign customer.
- The price for products starts from 2 300 000 Russian rubles (approx. 40 000 USD according to current exchange rate), including delivery and installation, but excluding the cost of flight of employees and customs clearance. Preferred method of payment is 100 % prepayment by bank wire transfer.

OUR CLIENTS



ADVANTAGES OF APPLICATION OF SCALES VRT-03 AND VRT-04

50 kg

Minimum weight of equipment (scales) in full package

4 hours

Time of installation of load receptors

20 million

Average mean life of scales, in wagons




24/7

Automatic weighing of wagons without participation of operator

150+

Weighing systems installed

CONTACT DETAILS FOR COOPERATION

Tel.: 8-800-444-57-40, 8-961-323-82-52   

LLC "STATERA", Rostov-on-Don, Russia, Sodruzhestva str., build. 39,2, room 96

Website: www.railscales.org, Email : inform@statera.ooo